

# COLOURS AVAILABLE BY ORDER

5-10 days delivery time.



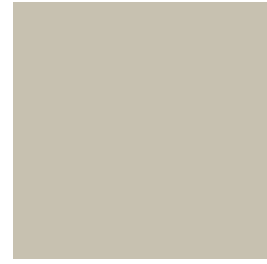
Spice (1)



Turmeric (1)



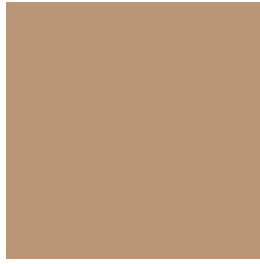
Fremantle (1)



Limestone (2)



Vesuvius (1)



Suede (1)



Ginger (1)



Atlantic (1)



Terracotta (2)



Pumpkin (1)



Taupe (1)



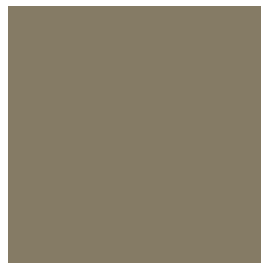
Marl (2)



Colonial Red (1)



Thistle (1)



Mangrove (1)



Monsoon (1)



Desert Red (2)



Bronze (1)

Whilst we have taken every effort to produce a brochure that best represents concrete coloured with Colourmix colours, we can not guarantee the colour of the final product. The colours shown in this brochure together with any samples or displays of Colourmix colours should be used as a guide to what may be achieved. All concrete colours are influenced by a number of factors including the concrete raw materials (notably cement, aggregates and sands can vary significantly with location), moisture content, curing, finishing techniques and weather conditions that are not under our control and that we can not guarantee. For projects where colour is critical we strongly recommend obtaining or placing representative concrete samples from your concrete supplier, precaster or concrete product manufacturer. We recommend using contractors experienced in placing and finishing coloured concrete and viewing local examples of their work. If the same colour of coloured sealer is used, finish may vary to the original oxide colour. All information is offered without warranty, representation, inducement or licence and Parchem and/or Cathay Industries does not assume legal responsibility for reliance upon the same.

Colour dose based on addition up to 32 MPa grey concrete.

(1) 1 x 10 kg bag per cubic metre

(2) 2 x 10 kg bag per cubic metre

Graphite = 1 x 9 kg bag per cubic metre

**parchem**

**colourmix**

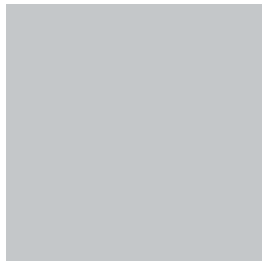
# COLOURS AVAILABLE IN BRANCH



Soapstone (1)



Cargo (1)



Arctic (2)



Charcoal (1)



Papyrus (1)



Sandstone (1)



Silver (1)



Graphite (1)



Cappuccino (1)



Pumice (1)



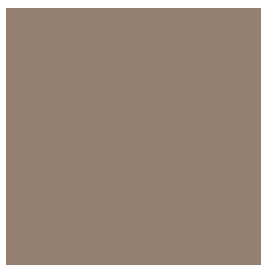
Platinum (1)



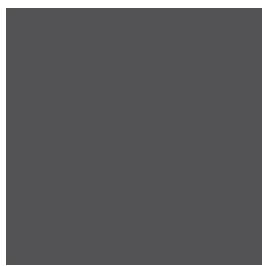
Jet Black (2)



Flint (1)



Sepia (1)



Bluestone (1)



Black Velvet (2)



Peppercorn (1)



**Parchem Construction Supplies Pty Ltd**  
 7 Lucca Road, Wyong NSW 2259  
 Phone: 1300 737 787  
[www.parchem.com.au](http://www.parchem.com.au)  
 ABN 80 069 961 968



Colour dose based on addition up to 32 MPa grey concrete.

(1) 1 x 10 kg bag per cubic metre  
 (2) 2 x 10 kg bag per cubic metre  
 Graphite = 1 x 9 kg bag per cubic metre