

Chemical Stain

April 2015

Permacolour Chemical Stain lets you create colours with real depth that are unique and captivating. Thousands of different looks can be achieved ranging from the understated elegance of burnished leather to the ageless beauty of natural stone. Chemical Stain will open the door to a whole new palette of creative expression.



Chemical Stain

DESCRIPTION

Permacolour Chemical Stain is a blend of acids, metallic particles and special additives which when applied to concrete penetrate the surface to combine chemically with elements in the concrete to form oxides. Thereby producing interesting variations of the chosen colour. The result is an aesthetic, mottled appearance, dark in places, light in others, with subtle shades of each, which cannot peel or flake.

The shade of colour obtained will be distinctly different when stain is applied to old or new concrete. The initial colour of the concrete before the stain can also affect the finished appearance. Application of additional stain to lighter areas will not necessarily change the disparity of shading.

PURPOSE

Permacolour Chemical Stain allows you to create colours with real depth that are unique and captivating. Thousands of different effects can be achieved, ranging from the understated elegance of burnished leather to the ageless beauty of natural stone. Chemical Stain will open the door to a whole new palette of creative expression. It will not produce a uniform coloured or painted effect and should not be used if that is the look desired.

SPECIFYING

Apply Permacolour Chemical Stain to cement surfaces by brush or spray method. After a minimum of four hours remove all residue by flushing thoroughly with water. Use Permacolour Neutraliser in the final rinse. Allow to dry and seal, all in accordance with the manufacturers specifications.

SUITABLE SURFACES

- Newly cured concrete surfaces which have cured for at least 14 days.
- Old existing concrete surfaces.
- Plastered, but unpainted wall surfaces.

- Existing unsealed Permacolour Micro Topping, Cement Paint or Decorative Overlay (to create more interesting shades, colours or patterns).

SURFACE PREPARATION

Old Surfaces: Surfaces should be firm and free from loose material. Previous coatings such as paint, sealers, curing agents, wax or petroleum based materials. Organic growth should be removed by brushing with a solution of 1 vol. household bleach (sodium hyper chloride) and 3 vol. water. Allow 12 hours to kill the spores and then remove with a wire brush and flush with water. Allow the surface to dry before applying Chemical Stain.

MIXING

Chemical Stain can be diluted with water if lighter shading is required.

WEATHER

Do not apply to exteriors if rain is expected.

APPLICATION

Apply with an acid resistant paint brush or spray canister; ensuring that adjacent areas are protected from overspray and spills. Avoid splashes, puddles and dry joints by maintaining a wet edge and by applying continuously between architectural features. Application by brush, broom, squeegee, pour, roll, sponge or spray, will create different effects.

- When applying by brush apply the stain liberally to a section no larger than can be covered by the wet brush. Spread evenly in a consistent manner. Continue to brush in over the same area without adding additional material. Avoid spreading the stain beyond the boundaries of the initial application, back into the previously completed area.
- When applying by sprayer, spray in an even manner avoiding overlaps, dripping and puddles.

Allow a minimum of 4 hours for the stain to work, then rinse well with water. Use Permacolour Neutraliser in the final rinse to stop the chemical reaction.

PRODUCT INFORMATION SHEET

Avoid excess rinse water running over other concrete areas as this can cause unwanted staining to these areas. If a darker effect is wanted, reapply until desired results are achieved. Remember that the “wet look” will simulate the “sealed look”.

SAFETY WARNING

Chemical Stain contains dilute hydrochloric acid. Treat with caution. Store away from heat and direct sunlight. Protective work wear including; rubber gloves, safety goggles and rubber apron should be used. Use only plastic or steel equipment and attachments.

DESIGNER FLOORS

- Transfer the desired pattern / image to the floor using a tape measure and chalk line.
- Create demarcations using a small grinder or scribe (2mm depth)
- Apply Chemical Stain to specific areas using a paint brush and sponge.
- Décor stencils can also be individually designed. These are places on the floor and stain is applied in the exposed areas, the stencils are later removed.



COLOURS

- Permacolour Chemical Stain is available in six distinctive colours. For other colours that may be available, contact Permacolour on **free phone 0508 444 555**.
- Turquoise and Jade should not be used on slag concrete or in areas subject to water from the subgrade or standing water. These conditions will darken or blacken the stained surface. When using these colours they should be considered for interior surfaces where the subgrade is well drained and free of hydrostatic pressure.

- One colour may be applied over another colour to create interesting colour blends.



SEALING

External Floors: 2 coats Permacolour Concrete Sealer with minimum 6 hours between coats. Application by synthetic lambskin roller.



Internal Floors: 2 coats Permacolour Ureglaze with minimum 10 hours between coats. Application by “strong solvent” roller.

COVERAGE

Varies from 5-15 square metres per litre, depending on suction and method of application.

PACKAGING: 2 litre and 5 litre plastic containers.

DISCLAIMER

Whilst any information contained herein is true, accurate and represents our best knowledge and experience, no warranty is given or implied with any recommendations made by us, our representatives or distributors, as the conditions of use and the competence of any labour involved in the application are beyond our control.

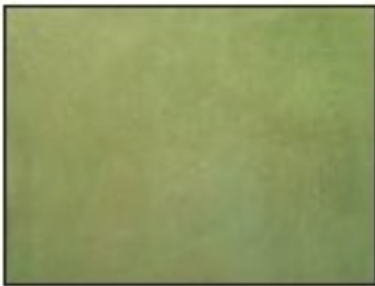
As all Permacolours technical data sheets are updated on a regular basis, it is the users responsibility to obtain the most recent issue.

CONDITIONS OF SALE

The material is guaranteed to be of standard quality and to conform to our published specifications. Since we have no control over use and application of this material, nor the areas to which it is applied, we disclaim any and all responsibility or warranties, expressed or implied, in connection with it's use, handling and storage or the results obtained; as well as any injury, damage of any nature whatsoever, resulting from its uses.



****PERMACOLOUR Chemical Stain Colours may vary****



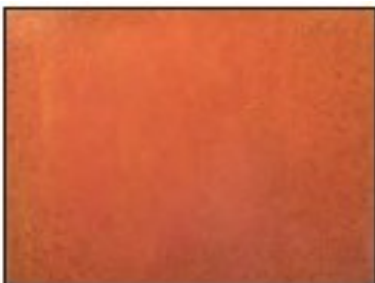
JADE



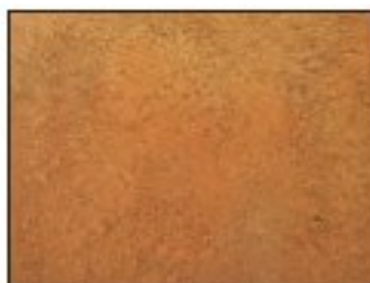
TURQUOISE



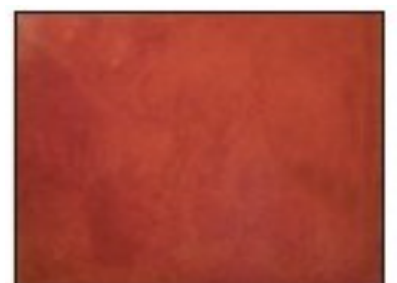
EBONY



COFFEE



CARAMEL



MAHOGANY

New Zealand Decorative Concrete Supplies

is a private company, 100% New Zealand owned and operated, providing the highest quality products and service in the decorative concrete industry!

HEAD OFFICE 42a Egmont Road, PO Box 7022, New Plymouth,
06 755 3320, info@permacolour.co.nz

FREEPHONE 0508 444 555

AUCKLAND WAREHOUSE 5B Nandina Ave, East Tamaki, Auckland,
09 272 8444, auckland@permacolour.co.nz

FREEPHONE 0508 666 777

CHRISTCHURCH OFFICE 25a Sheffield Crescent, Burnside,
PO Box 39148, Harewood, Christchurch, 03 358 9669,
christchurch@permacolour.co.nz

Manufacturers & Suppliers of

Concrete Colourings

Concrete Coatings & Additives

Concrete Tools

Imprinting & Overlay

Products & Equipment

Oxides & Sealers

Training

www.permacolour.co.nz