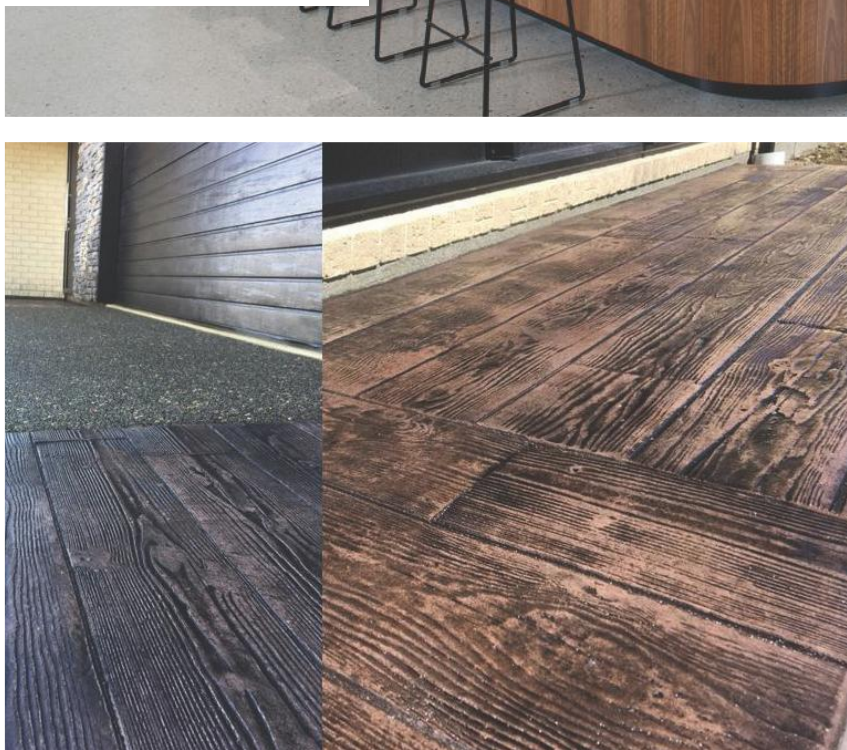




DECORATIVE CONCRETE FINISHES
INTERIOR / EXTERIOR
DOMESTIC / COMMERCIAL



ABOUT FLASH CONCRETE

WHO ARE FLASH CONCRETE?

FLASH CONCRETE IS A FAMILY BASED CHRISTCHURCH BUSINESS WHO WANT TO BRING THE EXISTING WORLD OF DECORATIVE CONCRETE TO THE CHRISTCHURCH MARKET. OUR EVER-EXPANDING TEAM COMPRISES OF SKILLED AND PROFESSIONAL TRADES PEOPLE FROM THE DECORATIVE CONCRETE AND OTHER VARYING CONSTRUCTION BACKGROUNDS FROM BOTH HERE AND OVERSEAS. THEY HAVE ALIGNED THEMSELVES WITH OUR VISION.

COMPANY PROFILE

What Is Our Vision Flash Concrete has one eye on Global trends in the concrete construction industry and the other on local trends. We will be the household name in Christchurch and then New Zealand for the go-to firm for finishes that are eye catching and extraordinary.

Why We Do It There is no better return on time than the praise from satisfied clients. We try to leave each client with a product that they either have never seen before or thought was impossible to achieve. Our excitement for what we do is contagious, which is obvious when you are engaged with our team.

What we do? We provide a range of different services & high-end products & finishes that fall under the Decorative Concrete banner. We provide options and services for both internal and external settings. Services can range from full project management down to partial involvement at varying stages.

EXTERIOR DECORATIVE CONCRETE & HARDSCAPES

- **Design options are limitless** Through the use of advanced colouring & texturing techniques, designs that were unachievable a few years back can now be constructed in faster times than other finishes.
- **Durable & Low Maintenance** Concrete is extremely tough and resilient. With the addition of sealers and other additives to the concrete and coatings we apply, these surfaces can stand up to the toughest beatings with very low maintenance, if any.
- **Cost effective compared to traditional surfaces like tiles or paving** These same looks can be achieved using our techniques. Plus, as concrete is typically cast as larger monolithic pieces, labour costs are reduced.
- **Long Lasting** Properly designed slabs specific to each use can last for decades under huge loads.



OUR DECORATIVE FINISHES



DECORATIVE CONCRETE FINISHES

ALTHOUGH WE STILL DO THE STANDARD FINISHES LIKE COLOURED, EXPOSED, STAMPED AND UTILITY PLAIN CONCRETE, WE ALSO CONSTRUCT AND INSTALL AN ARRAY OF FINISHES UNIQUE TO US IN CHRISTCHURCH BUT VERY POPULAR OVERSEAS.

OUR TEAM CAN BE INVOLVED AT VARYING STAGES OF THE PROJECT, FROM HELPING WITH CONCEPT AND DESIGN THROUGH TO PROJECT MANAGEMENT AND CONSTRUCTION OR IN A SMALLER ROLE AND JUST CONSTRUCT THE PROJECT ON A LABOUR ONLY BASIS.

THE WORLD OF DECORATIVE CONCRETE IS AN EVER-EXPANDING MARKET WITH FINISHES THAT CAN MIMIC OTHER HIGHER COST FINISHES WITH THE SAME AESTHETIC APPEAL, IN A SUPER HARD WEARING FINISH.

POLISHED CONCRETE

Most people don't realise that there are two different types of polished concrete. One being mechanically polished concrete (MPC) and the most common, referred to, in the industry, as a grind and seal (G&S).

Grind and Seal

Concrete grinding and sealing is a method of polishing concrete. There are 3 typical stone exposure levels, one we call a creme finish (no stone exposed) another is known as a salt & pepper finish (varying degrees of stone exposed with mainly speckles and in some areas very little or no stone) and lastly a Full Grind (more consistent with the full stone exposed)

Once the right level of stone exposure has been achieved with the concrete grinding, we then use finer diamonds to remove visible scratching and get a flat surface ready for a coating. At this point the concrete can be grouted, if you want a much smoother more refined glass-like surface.

For a full stone exposure finish, we will always grout the floor, but for a minimum exposure, you can choose if you want to add this step, as it will cost more. Lastly, the floor is finished with a protective sealer. This sealer can be a matte, semi-gloss or high-gloss.

Grind and seal concreting can be applied in a variety of situations both residential and commercial, indoors and outdoors and will give you a very durable and inexpensive finish that will last years.

The advantages of choosing a grind-and-seal concrete system are:

- Lower cost
- Low maintenance
- Bacteria resistant
- Free choice of gloss
- Outdoor options
- Slip resistance

Mechanically Polished Concrete

Mechanically polished concrete is a more high end finish and is for indoors only. The grinding process is much more involved and it causes the concrete itself to shine. There is no topical coating that is applied, and therefore the finish will last you a lifetime if cared for and maintained properly.

True Polished Concrete ends up being the cheapest flooring solution available on the market when you look at it over a 20 year cycle. So it's worth the extra money that it costs upfront because you have very little in the way of maintenance over the life of the floor.

Some of the benefits of choosing Mechanically Polished Concrete are:

- Better slip resistance
- Easy maintenance
- Resistant to staining
- Improved reflectivity
- Good aesthetics
- Reduced costs



POLISHED CONCRETE

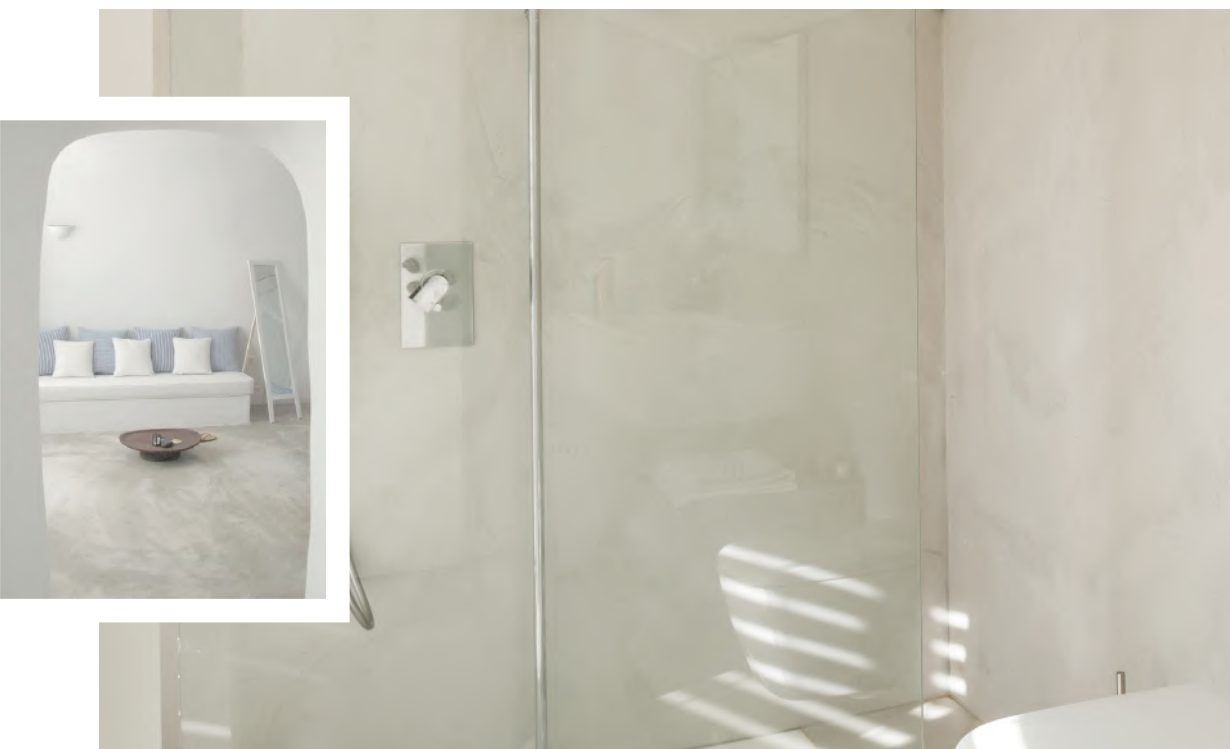
POLISHED CONCRETE IS FAST BECOMING THE MOST POPULAR CHOICE WHEN LOOKING AT FLOORING OPTIONS. BESIDES IT'S WIDE USE IN THE COMMERCIAL INDUSTRY, IT IS NOW A COMMON OPTION IN HOMES DUE TO IT BEING THE ENVIRONMENTALLY SENSIBLE SOLUTION AND IT'S THERMAL RETENTION PROPERTIES. ITS MODERN STYLISH LOOK COUPLED WITH THE PRACTICALITY, EASY MAINTENANCE AND DURABILITY, HAS SEEN ITS POPULARITY SOAR IN RECENT YEARS.

POLISHED CONCRETE FINISHES

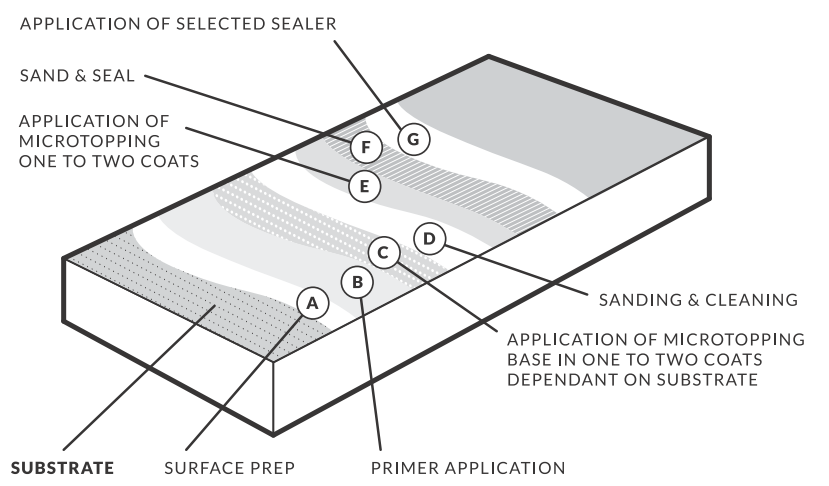
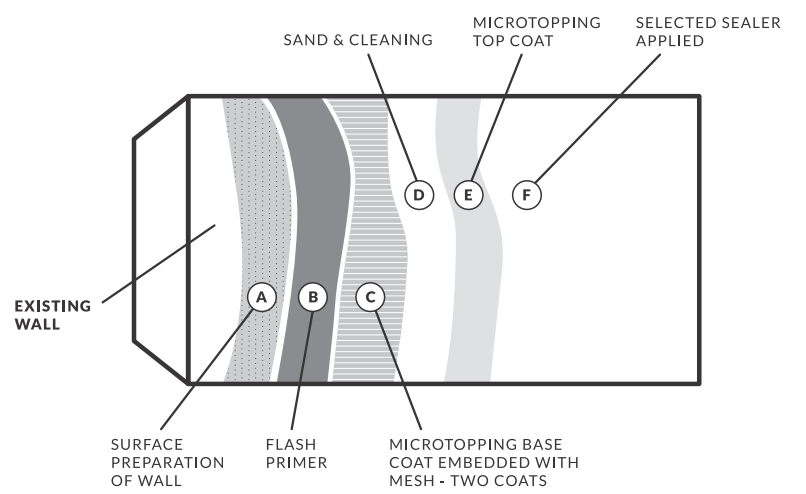
MICROTOPPINGS

Microtopping Advantages:

- **Hard Wearing** As the Microtopping is made up of high strength polymers, selected sand and cements, it is very hard wearing, even in high traffic commercial environments.
- **Stain Resistant** All applied surfaces are finished with a selected sealer depending on the budget and final look. These sealers are stain resistant and tough.
- **Gloss or Matte** Depending on the final look desired, the Microtopping can be sealed in either gloss or matte sealers.
- **Range of Colours** The Microtopping itself can be integrally coloured in a standard range of colours or can be colour matched for a specific project.
- **Versatility** The texture of the Microtopping can be applied to be flat or the product can be manipulated when applying, to a more textured finish. The surface can also be stained prior to sealing with other products such as water based stains and acid stains, to give a very rustic effect.
- **Wet Areas** These surfaces can be applied to wet areas such as bathrooms and showers. With the addition of special waterproofing membranes to the system, you can say goodbye to grout lines and plastic shower cubicles.
- **Vertical & Horizontal** These same finishes can be applied to both floors and walls creating a seamless flowing look without lines that cannot be achieved in any other way.
- **Visually Appealing** The warmth and neutrality of the finished surface just looks great.



Microtopping Wall



MICROTOPPINGS

MICROTOPPINGS

A GREAT ALTERNATIVE TO POLISHED CONCRETE, MICROTOPPINGS ARE GROWING IN POPULARITY TODAY AND ARE HUGE IN THE UNITED STATES AND EUROPE.

FLASH CONCRETE'S MICROTOPPING SYSTEM IS IDEAL FOR THOSE WHO WANT A FLOWING, INNOVATIVE AND VISUALLY PLEASING FINISH THAT CAN MAKE ANY SPACE VERY UNIQUE. IT CAN BE USED IN A MINIMAL CONTEMPORARY SPACE WHERE THE MICROTOPPING JUMPS OUT AS THE MAIN FEATURE, OR IN A MORE TRADITIONAL, RUSTIC SETTING, WHERE IT COMPLETES THE LOOK WITH TASTEFUL DISCRETION.

WITH AS LITTLE AS JUST THREE MILLIMETRES OF THICKNESS, FLASH CONCRETE'S MICROTOPPING SYSTEM ALLOWS YOU TO RENEW EXISTING SURFACES (CONCRETE, SELF-LEVELLING COMPOUNDS AND IN SOME CASES, CERAMIC TILE AND WOOD...) WITHOUT HAVING TO REMOVE THEM. IT IS EXCEPTIONALLY RESISTANT TO CHANGES IN CLIMATE, SIMPLE TO KEEP CLEAN AND FAST TO INSTALL. IT IS ALSO IDEAL WHERE UNDERFLOOR HEATING IS USED.

A MICROTOPPING PROVIDES THE LOOK OF A CONTINUOUS SURFACE, PERFECT FOR THOSE WHO DO NOT LIKE THE LOOK OF GROUT LINES AND THE CLEANING THAT GOES ALONG WITH THEM. ITS OUTSTANDING FEATURES MAKE IT IDEAL FOR BOTH HORIZONTAL AND VERTICAL SURFACES, SUCH AS PLASTERBOARD OR MASONRY WALLS, STAIRS, BATHROOMS AND SHOWER ENCLOSURES.

CONCRETE BENCHTOPS

At Flash Concrete, we create concrete benchtops and bespoke pieces using a number of different procedures. Typically though they are made in one of two ways:

Precast GFRC (Glass Fibre Reinforced Concrete)

Fibre glass reinforced concrete is not a new technology. It has been around for a long time and has been adapted for use in the production of concrete panels and now benchtops since the early 2000's. An explosion of the use of this material in the United States has now found its way to New Zealand through Flash Concrete.

Our system uses special additives and systems imported and adopted from Trinic LLC. based in the United States.

GFRC panels are typically cast offsite and then transported to site and installed. Because of the super high strength (Up to 90mpa) when adequately cured, we can cast benchtops as thin as 20mm thick compared to the typical 70mm – 100mm for standard cast in place benchtops.

Benefits of Precast GFRC:

- Lightweight
- Precast
- Insitu Features
- Colour options
- Stain Resistant
- Repairable

Drawbacks of Precast GFRC:

- Size limitations

As the pieces are precast and have to be transported, these may need to have seams so they can be moved to site and set in place.

CONCRETE BENCHTOP FINISHES

CONCRETE BENCHTOPS ARE A HANDMADE ALTERNATIVE TO OTHER KITCHEN SURFACES THAT OFFER THE ABILITY TO HAVE FULL CUSTOMISATION.

WITH CONCRETE YOU GAIN THE FUNCTIONALITY AND HARD WEARING WORKSPACE THAT YOU GET FROM HIGH END STONE BUT WITH THE ABILITY TO CAST LARGE OR SMALL PIECES WITHOUT SEAMS.

CONCRETE IS A MATERIAL THAT IS NOW HIGHLY REQUESTED BY ARCHITECTS, DESIGNERS AND HOME OWNERS ALIKE. IT IS NOW A FEATURE IN MANY HOMES, RETAIL STORES, OFFICES ,RESTAURANTS AND BARS. WITH CONCRETE BENCHTOPS, YOU CAN CREATE A CENTREPIECE THAT IS BEAUTIFUL AND ONE OF A KIND. THE FINISHED SURFACE CAN BE IN A SMOOTH, ULTRA MODERN FINISH OR CAN BE MECHANICALLY POLISHED DEPENDING ON THE LOOK DESIRED.

CONCRETE BENCHTOPS



Cast in Place

Casting in place is where we form up the benchtop and pour it onsite. There are advantages to this in that we can cast larger pieces without seams as transportation is not required. The benches themselves can be cast in our specially designed solid concrete or GFRC Mix. With solid cast in place pieces, weight does have to be factored in, especially on timber floors. The look of a cast in place does differ from a GFRC benchtop as cast in place is finished right side up as opposed to a GFRC benchtop with is cast upside down into a mould. This brings a different, but still beautiful look that is truly one of a kind.

Benefits of Cast In Place

- No size limits
- Same benefits as GFRC

Drawbacks with Cast In Place:

- Downtime

With both of these finishes, special staining and other effects can be applied post constructing and prior to sealing.



DECORATIVE CONCRETE OVERLAY FINISHES

CONCRETE OVERLAYS

IN THE WARMER MONTHS, OUR UNIQUE OVERLAY SYSTEM IS OUR MOST POPULAR SERVICE. FLASH CONCRETES OVERLAY SYSTEM IS A UNIQUE AND EXTREMELY HARD-WEARING SURFACE THAT CAN BE APPLIED TO DAMAGED AND NEW CONCRETE SURFACES BOTH INDOORS AND OUT.

MADE UP OF HYBRID, TOP QUALITY POLYMERS, SELECTED SANDS, CEMENT, AND OTHER ADDITIVES, OUR CONCRETE OVERLAY SYSTEM IS NOW BEING USED THROUGH CHRISTCHURCH AND FURTHER AFIELD TO CREATE AMAZING DURABLE SURFACES TO RESIDENTIAL AND COMMERCIAL DRIVEWAYS, PLAZA'S, FLOORS AND WALKWAYS.

THROUGH ADVANCED COLOURING AND TEXTURING TECHNIQUES, WE CAN MANIPULATE THE PRODUCT TO RECREATE THE LOOK OF MORE TRADITIONAL SURFACES LIKE TILE, BRICK, TRAVERTINE OR EVEN WOOD AS WELL AS BEING ABLE TO PROVIDE MORE MODERN SEAMLESS LOOKS IN WHATEVER PATTERN IS DESIRED.

BECAUSE OF THE HIGH CEMENT CONTENT AND THE POLYMERS USED IN THESE COATINGS, OUR CONCRETE OVERLAYS HAVE MUCH HIGHER ABRASION AND IMPACT RESISTANCE THAN OTHER CONCRETE SURFACES.

DECORATIVE CONCRETE OVERLAYS

Benefits of Decorative Concrete Overlays

Cost Effective As this system can be applied over the top of existing concrete surfaces, the need to remove concrete is eliminated. Quite often, cracks can be repaired and a full renovation can be completed to large areas within days.

On large decorative concrete pours that typically involve many visits to attain certain looks, labour begins to blow out costs for a given project. Because we can now pour large areas as a monolithic piece and apply the surface post pour, we can cut down costs significantly.

Durability Because of the materials the product is made from, they can be used in high traffic foot and vehicle settings.

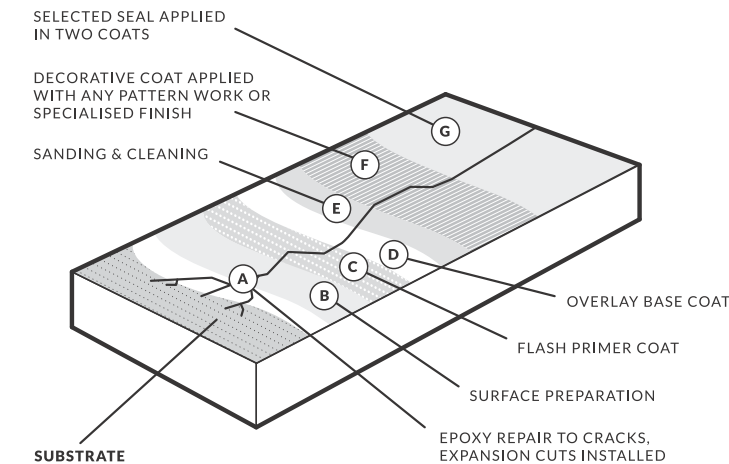
Versatile The product itself can be manipulated to create desired looks. It is also integrally coloured or topically stained to create real depth of colour. It can be fully customised to each project and colours can be matched to any desired swatches.

Stain Resistant The surface is sealed with a topical sealer which is chosen dependant on the client's needs and budget.

Fast Turnaround Depending on the existing surface which our System is applied to, we can turn around thousands of m2's in days.

Non-Slip

Our sprayed textures which are most popular are excellent underfoot and perfect for areas that get wet or where bare feet are in contact with the surface around swimming pools.



EPOXY COATINGS

There are different options for epoxies depending on the need of the client. These can be very simple or quite detailed.

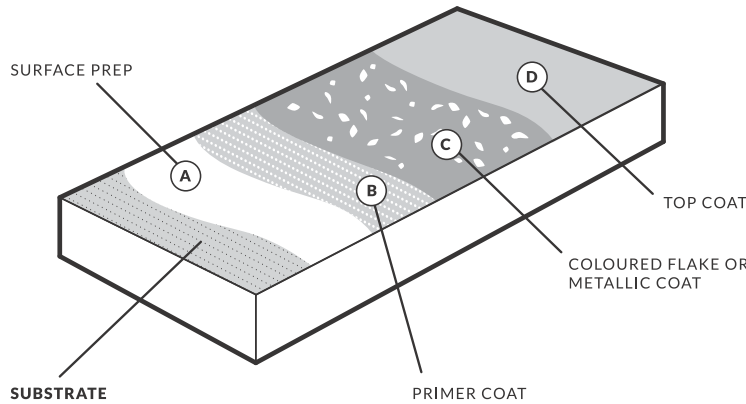
Coloured Integrally Typically in industrial settings such as warehouses, epoxies are coloured with pigments added to the epoxy itself. Specially selected sands are then often broadcast into the surface to provide added strength and traction.

Flake Flooring To create a more decorative custom look, selected paint flakes are broadcast into the wet epoxy. Once this layer has dried, any remaining flakes are removed and then a further clear coat is applied to the surface.

Metallic epoxies Metallic epoxies are hugely popular overseas and are starting to take a hold here in New Zealand. Using a very similar process to above, a metallic pigment is added to the epoxy. With onsite manipulation while applying, the surface achieves the look of metal. These pigments come in a large range of options and combinations. These are hugely popular in offices, bars, and retail settings where the floor is the centrepiece.

Epoxy Coating Advantages:

- High Gloss
- Durable
- Fast
- Epoxy floors are really fast and easy to install.
- Stain resistant
- Versatile



EPOXY COATINGS

EPOXY FLOOR COATINGS OFFER A RELIABLE AND HARD WEARING OPTION FOR BOTH COMMERCIAL, INDUSTRIAL AND RESIDENTIAL FLOORS. THESE COATINGS ARE TYPICALLY APPLIED OVER A CONCRETE SUBSTRATE TO PROVIDE A HIGH PERFORMING, DURABLE AND SMOOTH SURFACE THAT CAN WITHSTAND HEAVY LOADS FOR A NUMBER OF YEARS.

MANY WAREHOUSES, INDUSTRIAL AND COMMERCIAL BUILDINGS INSIST ON EPOXY FLOORS AS ANY OTHER SURFACES CAN NOT STAND UP TO CHEMICALS QUITE LIKE EPOXIES.



EPOXY COATING FINISHES



32 Hawdon Street, Sydenham
Christchurch, New Zealand

Ph: 03 595 2079

sales@flashconcrete.co.nz

FLASHCONCRETE.CO.NZ

